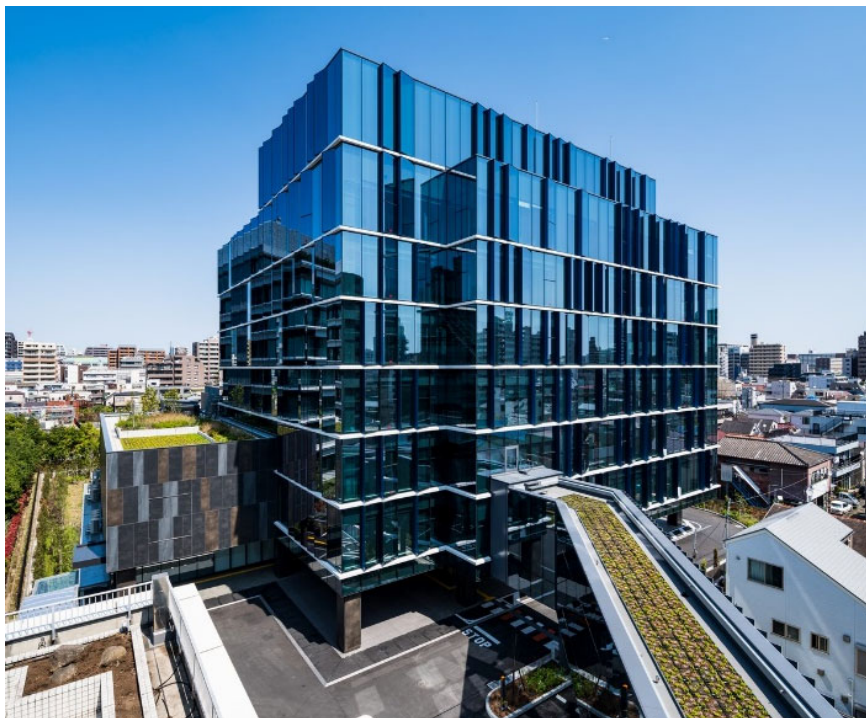


April 26th, 2021

Press Release

Mitsubishi Jisho Sekkei Inc.

Opening Announcement for LIXIL WING HOSHI BUILDING



In 2019, LIXIL, maker of pioneering water and housing products erected a new, custom-designed building HOSHI. Consolidating its headquarters, the HOSHI building became the fourth building on the LIXIL WING campus, joining KAZE, HIKARI, and NIJI buildings.

(KAZE, HIKARI, NIJI and HOSHI mean respectively wind, light, rainbow and star in Japanese)

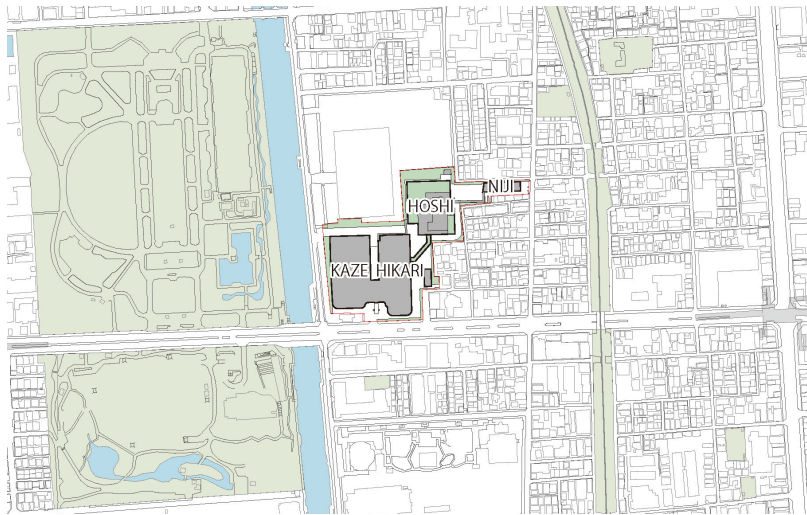
This project consolidates LIXIL's global headquarter functions from the Kasumigaseki Building to the LIXIL WING campus, accommodating a diverse workforce of over 5,000 people that promotes flat and open communication and realize faster decision-making.

Located in the east of the bustling Tokyo metropolis, WING campus looks out over a quiet River, the lush greenery of a park, and a stunning backdrop of the Tokyo Skytree.

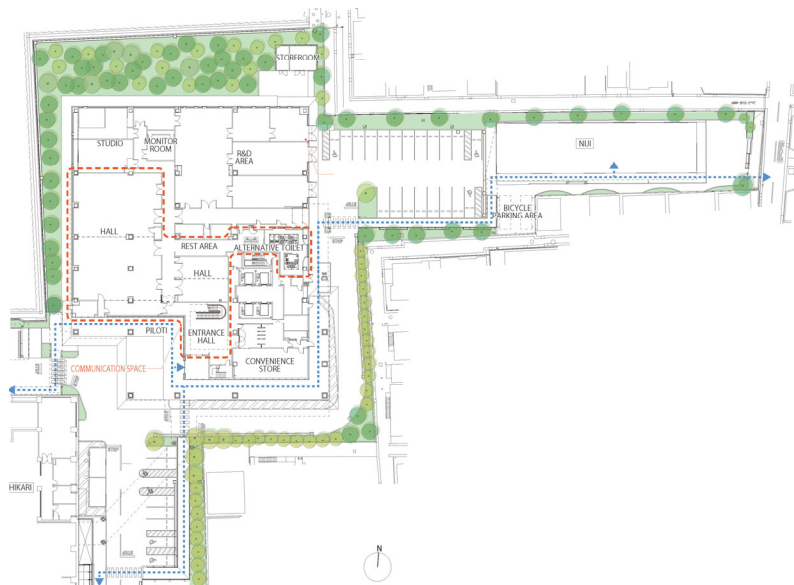
CONTACT : Mitsubishi Jisho Sekkei Inc.
Marunouchi 2-chome Building, 2-5-1 Marunouchi, Chiyoda-
ku Tokyo 100-0005 Japan www.mj-sekkei.com



The natural and open environment allows pleasant seasonal wind blow through the site.



Site Plan

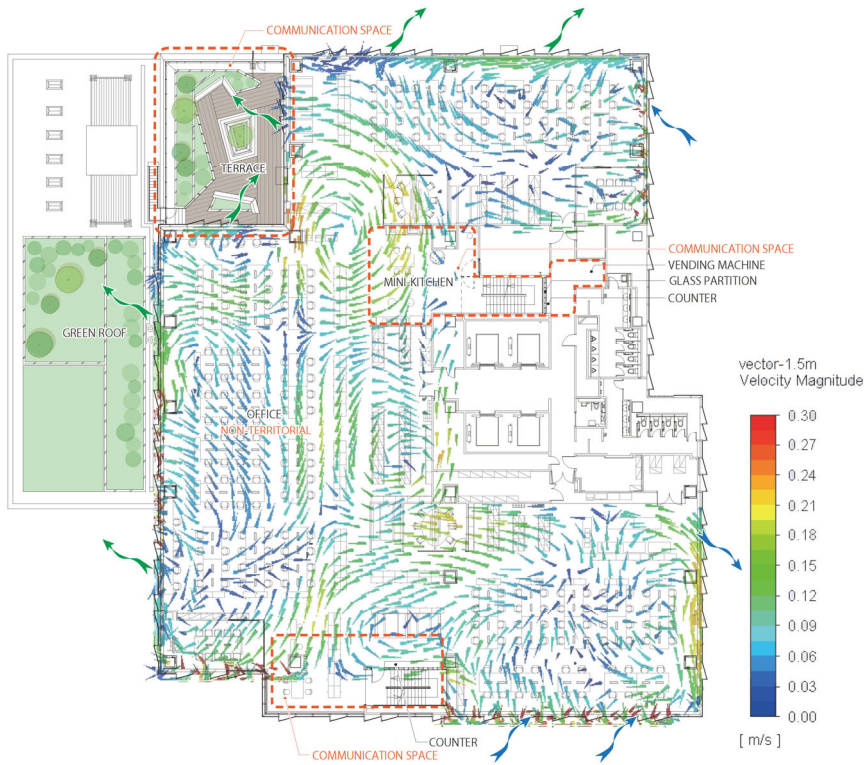


1F Plan

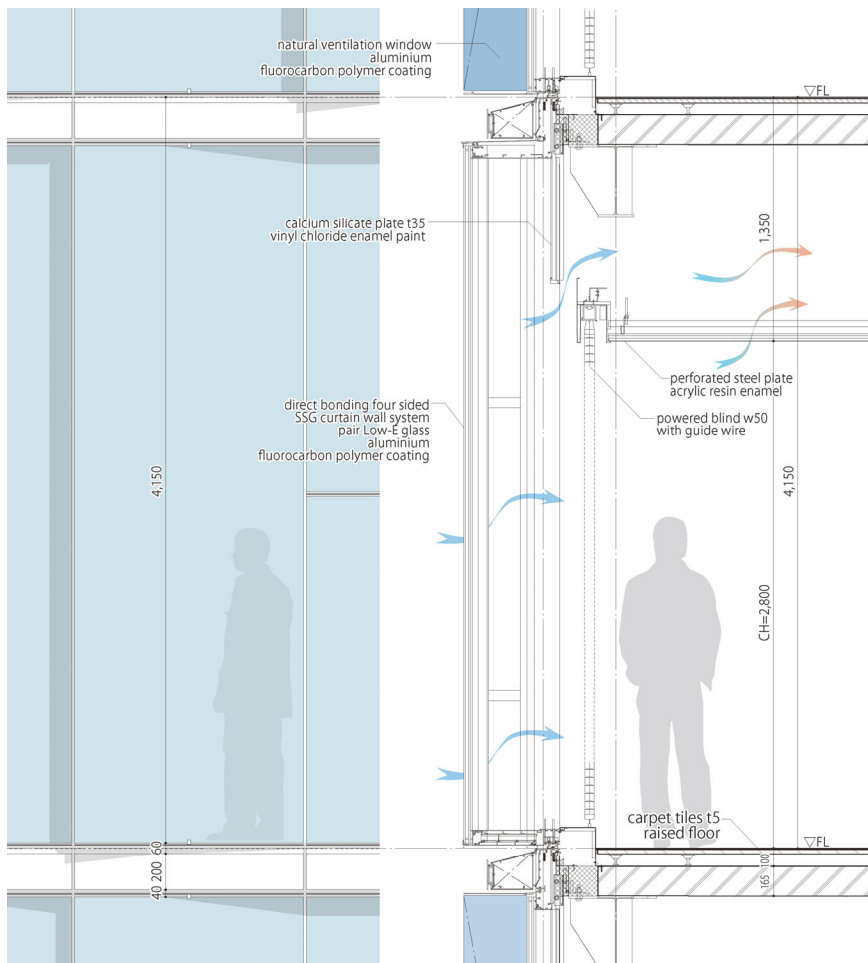
Leveraging its natural surroundings and its open-ness, the building is installed with LIXIL's own, newly developed hybrid ventilation system in the HOSHI building for a comfortable and eco-friendly "breathable office". The new system includes automated curtainwalls that draw the optimum amount of wind based on an index that monitors comfort with its analysis of internal and external air quality; temperature, humidity and winds or other factors of the weather. Installed ahead of the current rising demand for improved ventilation of buildings, the technology provides the benefits of natural air and a taste of the seasons for employees, while it also minimizes its dependency on air-conditioning.



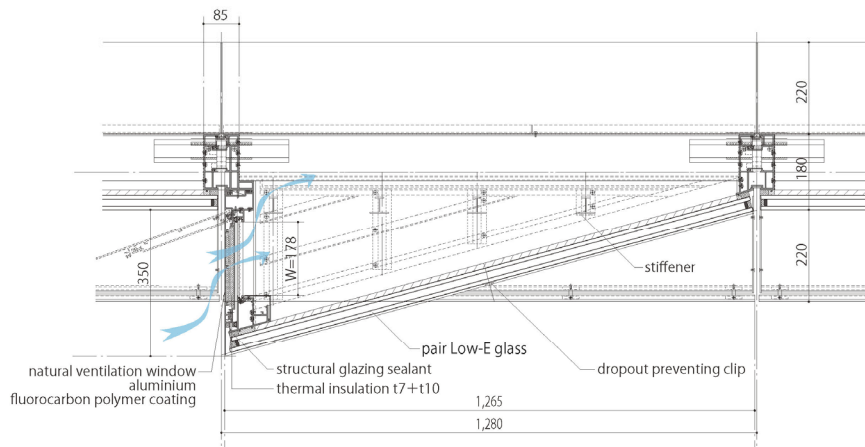
Ventilation panels are painted in traditional blue colors.



4F Plan



Facade detail section

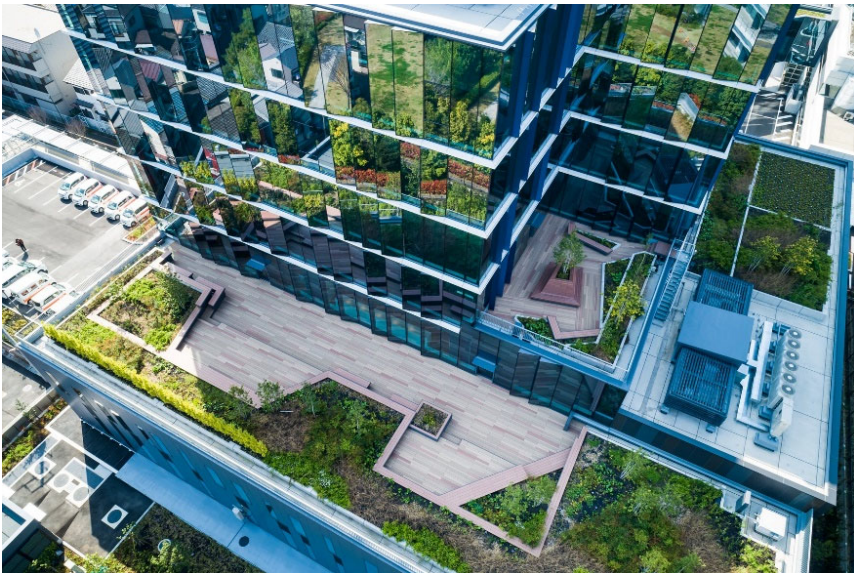


Facade detail plan

A variety of communication spaces are created around the office, like an open kitchens and high counters, to encourage informal discussions for improved understanding and collaboration. Places like café and rooftop terrace also provide more choices of free and flexible ways of working. With a variety of free spaces, the building is not just an office space with desks to go to, but also a place for exchanging diverse ideas and conceiving new values.

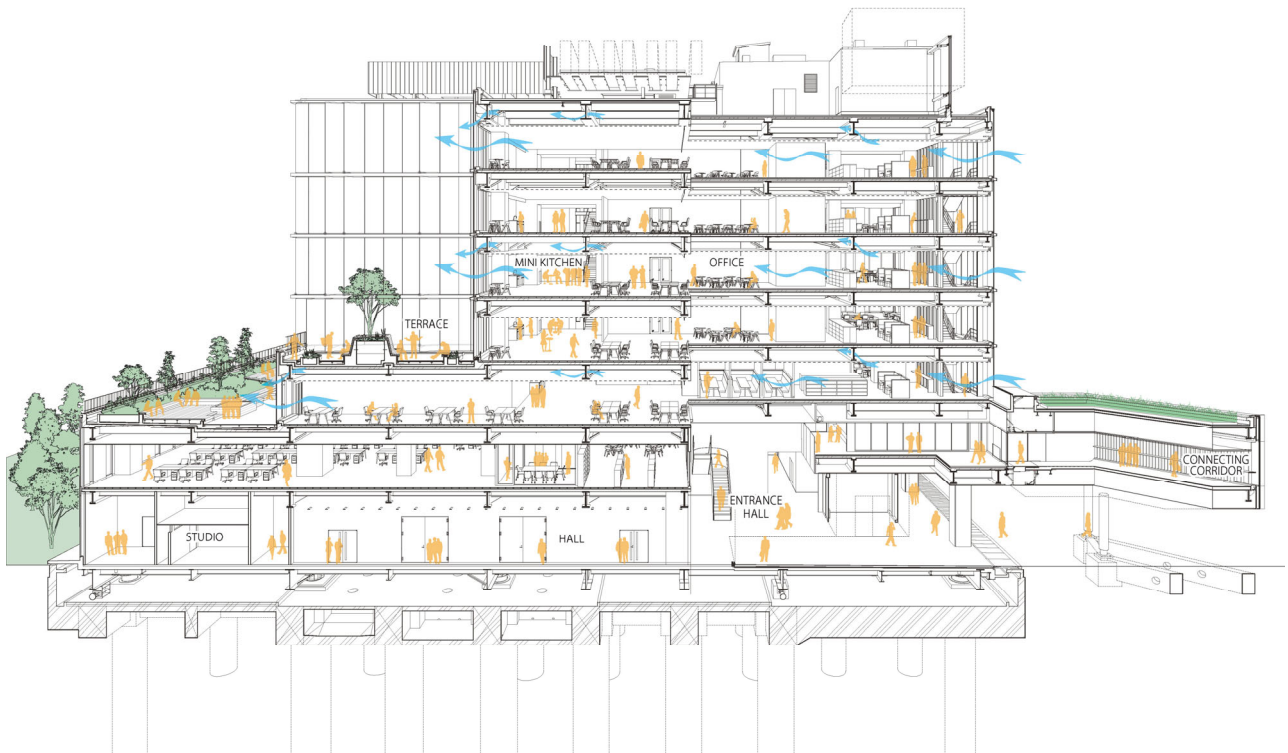


Communication space around the stairs promotes interaction and informal conversation.



Rooftop terrace is also available for all employees.

From installing its leading water and housing solutions, to the use of 100% renewable energy and its incorporation of new HR initiatives to embrace new ways of working in design, LIXIL's new Global Headquarters is designed to reflect the company's business and corporate responsibility strategies and its commitment to circularity and inclusivity – to make better homes a reality for everyone, everywhere.



Perspective Section

LIXIL WING HOSHI BUILDING

Architects: Mitsubishi Jisho Sekkei
Completion: 2019
Location: Tokyo, Japan
Building Use: Office
Site Area: 18,680 m²

Total Floor Area: 14,408 m²
Floors: 8 above ground
Structure: S (Seismic Isolation)
Photographs: FOTOTECA
Manufacturers: LIXIL, DINAONE, KAWASHIMA SELKON TEXTILES